

mary maxim

No. 17326

Birdhouse Tissue Box Cover

Size: 6 x 8 x 6" [15 x 20.5 x 15 cm]

Fits Boutique Size Tissue Box

Materials:

Plastic Canvas

Needle

Yarn:

Beige	Lt. Pink	Green
Natural	Med. Pink	Grey
Med. Blue	Purple	White
Dk. Blue	Yellow	Black



NOTE: Please read all of the instructions before beginning. You may need to use a few common household items to complete your project.

GENERAL INSTRUCTIONS: Cutting the canvas must be done very carefully. If you miscut, the piece is ruined and you'll have to cut another piece. Our graphs show the shape of the pieces when they are cut out, making it easier for you to follow the cutting line. To cut, count bars not holes. On each graph we show the total maximum number of bars required for each piece. (If you find it necessary to mark on canvas, use a pencil, but use it cautiously as the yarn will pick up the marks.) Plastic canvas is washable but do not put it in the dryer and do not dry clean. Cut in the space between the bars (as shown on graph) rather than on a bar. After cutting, you will need to trim off all plastic nubs that remain to give your work a more finished look.

STITCHING INSTRUCTIONS: Using 1 yd pieces of yarn, keep an even tension, making sure canvas is completely covered. However, too tight a tension will cause the canvas to curl. Work row across, first from left to right, then returning from right to left. To begin strand, draw needle through canvas until about 1/2" [1 cm] remains at back. Hold this end close to canvas and catch it in stitches on reverse side of work. To end each strand, put needle through to back and draw under a few stitches to secure. Trim yarn close to work. Start overcast stitches in the middle of rows where possible, instead of the corners. This will

make the corners stronger.

Cut out all pieces from the plastic canvas. Cut out the center area of the base top and bottom pieces, the entry trim piece and all indicated areas on the roof trim pieces.

HOUSE: Work the beige stitches on both side pieces as shown on graph A. The joining row and the area below the joining row are not worked.

Work the French knots, green lazy daisies and long stitches (shown on graph B) on both sides over the beige stitching.

Work the black stitches on the front and the beige stitches on front and back pieces, filling in each piece above the joining row. The joining row and area below are unworked as on sides.

Work the French knots, green lazy daisies and long stitches over the beige stitching on the front and back pieces as shown on graph.

Using yellow, overcast all edges of the large flowers.

Using purple, overcast all medium and small flowers. Place each flower on the front, back and side pieces where indicated and work the French knots through the flower and the piece to hold in place.

Using natural, overcast the inside and outside edges of the entry trim piece.

Center the trim over the black stitches on the front and tack in place.

Using beige, join a side piece to each side edge of the front piece. Join the back piece to both side pieces.

BASE: Work the stitches on the base top and side pieces. Place the birdhouse into the center of the base top.

Bring the base top up to the joining rows. Using beige, join the inside edge of the base top to the joining rows on the house.

Using beige, join the inside edge of the base bottom to the bottom edges of the house.

Using natural, join a base side piece to each edge of the base top.

Using natural, join the lower edge of each side piece to the base bottom. Join the sides together at each corner as you work around the base.

Work the half cross stitches on the bird. Work the grey French knot eye. Overcast the bird using colors to match stitching. A few overcast stitches are marked on graph where matching may not be clear or to complete design.

Divide a piece of medium blue yarn into its individual ply and use 2 ply to work the long stitches on the wing and tail.

Tack the bird to the front of the birdhouse, placing as shown in picture.

ROOF: Work the stitches on each roof piece. The joining rows are not worked.

Join the top edges of the roof together matching the A's and B's and using dark blue. Overcast the opening on the roof using dark blue.

Work the stitches shown on the trim pieces as you overcast the cut outs and the bottom edge from A to B of each piece.

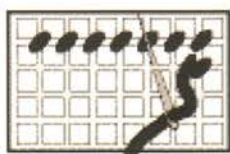
Using dark blue, join a side trim piece to each side of the roof along the joining row from X to X.

Using dark blue, join the front and back trim pieces to the roof along joining rows matching up the X's.

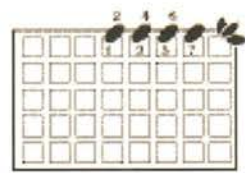
Overcast the unworked roof edges using dark blue. Use 2 ply of medium blue to tack the roof to the house.

Key

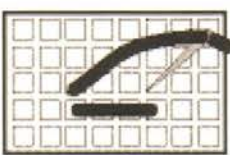
-  Beige
-  Natural
-  Dark Blue
-  Med. Blue
-  White
-  Black
-  Grey
-  Green
-  Joining



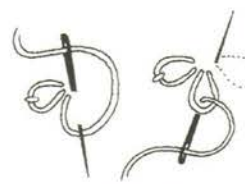
Half Cross Stitch



Overcast Stitch



Long Stitch



Lazy Daisy



French Knot

French Knot Key

-  Lt. Pink
-  Med. Pink
-  Yellow
-  Grey
-  Med. Blue

EVERY EFFORT HAS BEEN MADE TO HAVE THE DIRECTIONS CONTAINED IN THIS PATTERN ACCURATE AND COMPLETE; HOWEVER, WE CANNOT BE RESPONSIBLE FOR MISINTERPRETATION, VARIANCE OR ERRORS IN WORKMANSHIP OF THE INDIVIDUAL.

"Reproduction of this pattern in any form (including photostat) is protected by copyright. Any infringement will lead to prosecution."

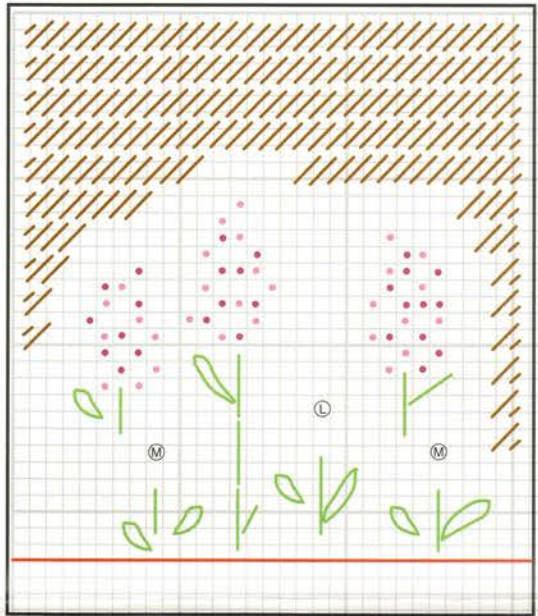
mary maxim

2001 HOLLAND AVE., PORT HURON, MI 48060

75 SCOTT AVE., PARIS ONTARIO, CANADA N3L 3G5

Yarn Imported

Flower Placement	
Ⓢ	Small
Ⓜ	Medium
Ⓛ	Large

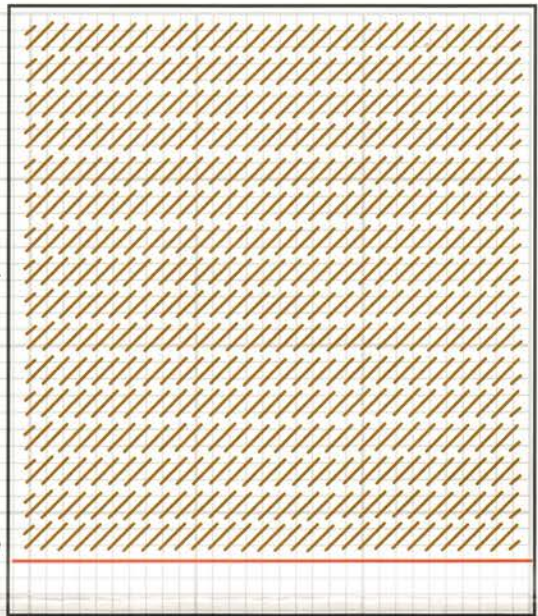


Graph B

Sides

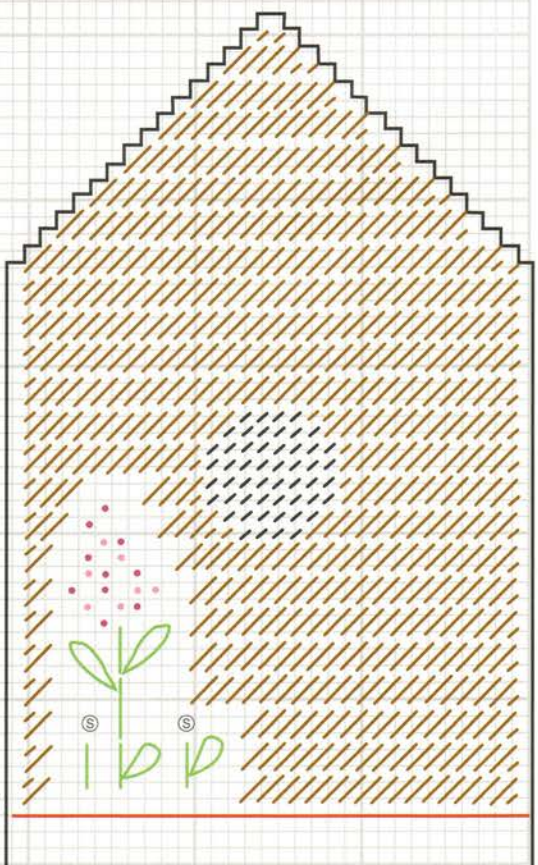
Graph A

Joining Row



Back

Joining Row



Front

